

LOCATING THE MOTRONIC (DME) UNIT:

The Motronic (DME) is an unpolished silver metal box approximately 18cm x 16cm x 4cm (6"x5"x2") labeled "MOTRONIC" either embossed or with a sticker. It is located under the driver's seat, remove the floor mat to locate it.

TOOLS NEEDED FOR REMOVAL:

Small Ratchet (socket wrench), Small Flat Head Screwdriver and a 10 mm socket with extension.

REMOVING THE MOTRONIC (DME) UNIT:

- Slide the driver's seat back all the way back and up (if possible). Remove the floor mat.
- Loosen the 4 nuts attached (10 mm).
- Slide the Motronic slightly forward.
- Remove the wiring harness connector by removing the retaining bracket (held in by a 10 mm washer and nut).
- Remove the nuts and lift the unit off of the studs.
- Hold the Motronic (DME) with one hand. Flip the steel retaining tab back that holds the connector.
- Disconnect the box from the wiring plug by rotating the box out, away from the retaining tab.

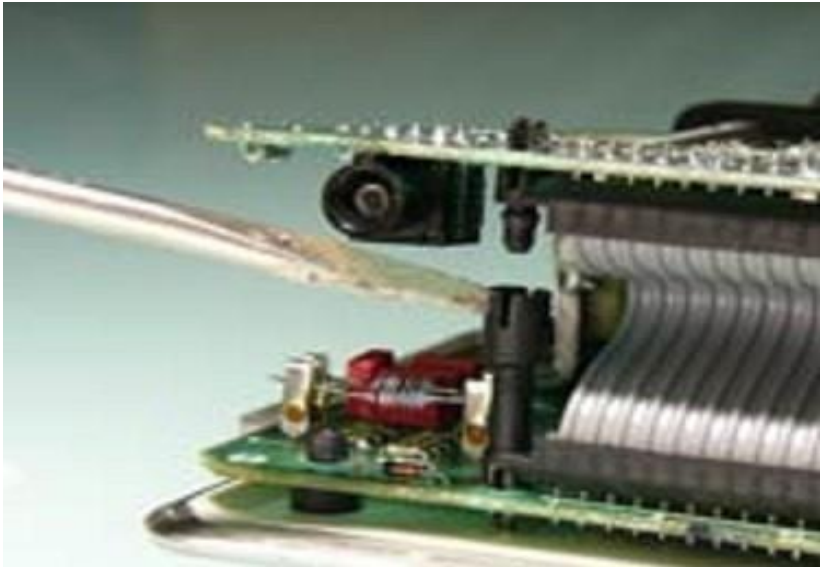
OPENING THE MOTRONIC (DME):

1. Using a Small Flat Head Screwdriver, straighten the 10 metal tabs on the back of the Motronic.
2. Remove the cover and the white plastic insulating sheet.



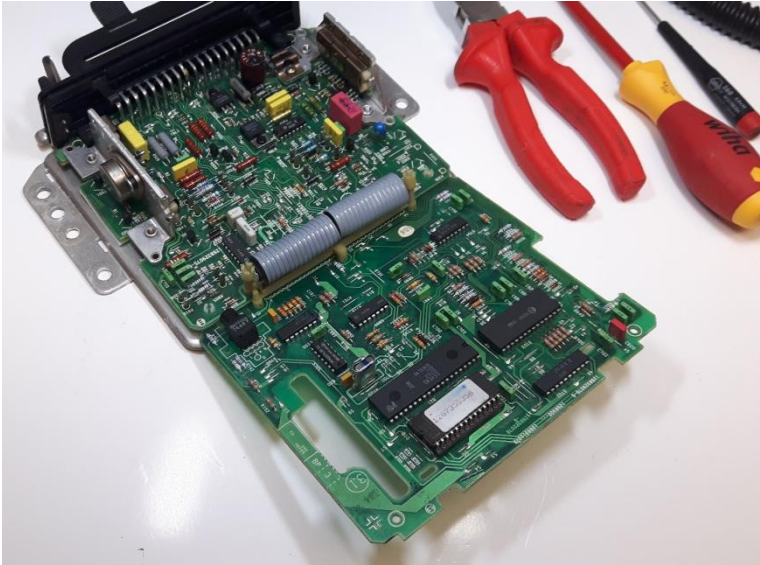
3. With your Small Flat Head Screwdriver, locate the male / female connector posts (picture # 1 on page 2). You will need to CAREFULLY unsnap the male side from the female side, the best way to do this is to place a small flathead screwdriver in the slit on the female post and gently pry up, while gently pulling the two boards apart. Force is needed so be sure to pull on the bracket between the plastic posts. Also, be careful not to flex and break the corners of the board, so firmly hold the middle of the board. NOTE: DO NOT TRY TO SEPARATE THE BOARDS COMPLETELY YET!!

Picture # 1



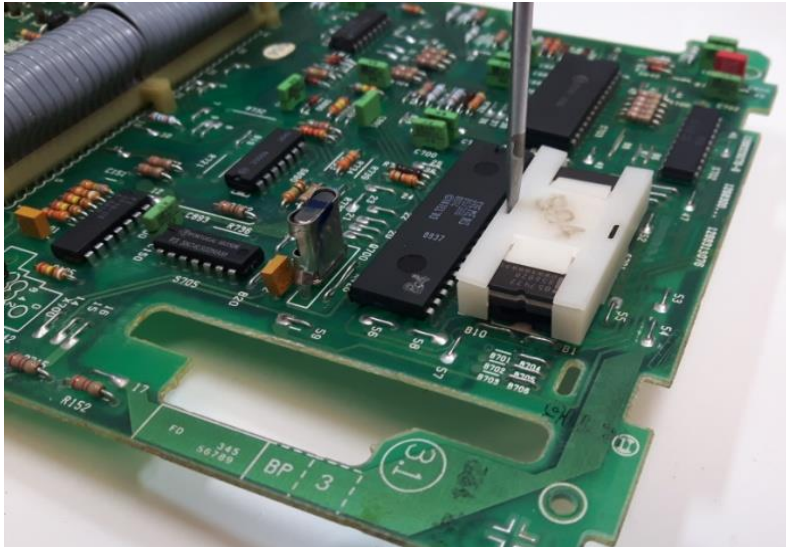
4. Open the two boards like a book, ensuring that the ribbon cable is still intact. (Picture # 2)

Picture # 2

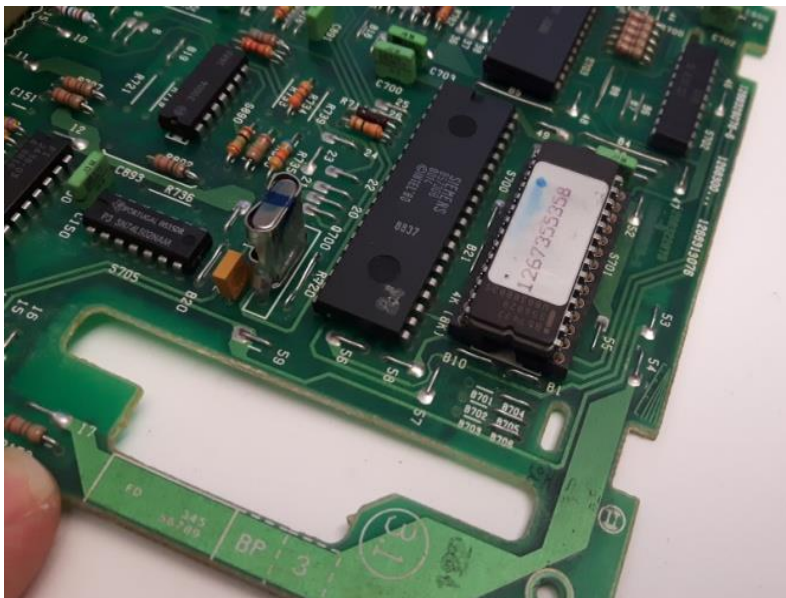


5. The chip is located in the position below (picture # 3) where the screwdriver is shown. If you have a 28-pin chip it should have a white plastic cover. To check the pin count, insert the small flathead screwdriver into one of the slots and pop it up. Do the same for the other side. If it doesn't have this plastic cover, typically it is a 24pin chip, but kindly count the pins to be sure.

Picture # 3



Picture # 4



WHEN ORDERING WE REQUIRE THE FOLLOWING INFORMATION:

1. Bosch # (0261 200...)
2. Porsche # (911.618...)
3. Pin Count (24 or 28-pin)